



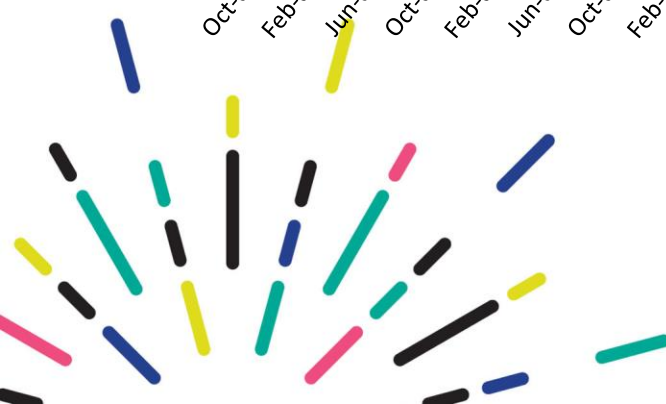
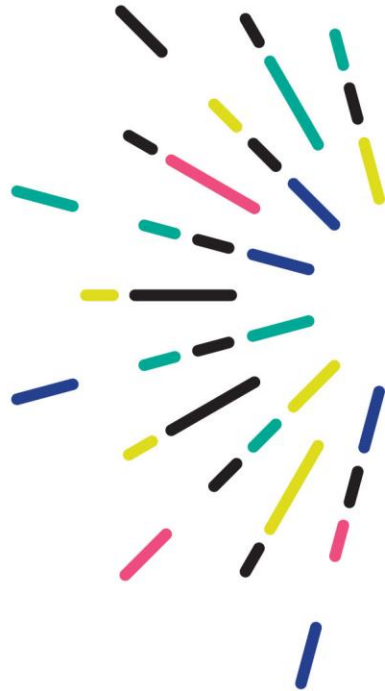
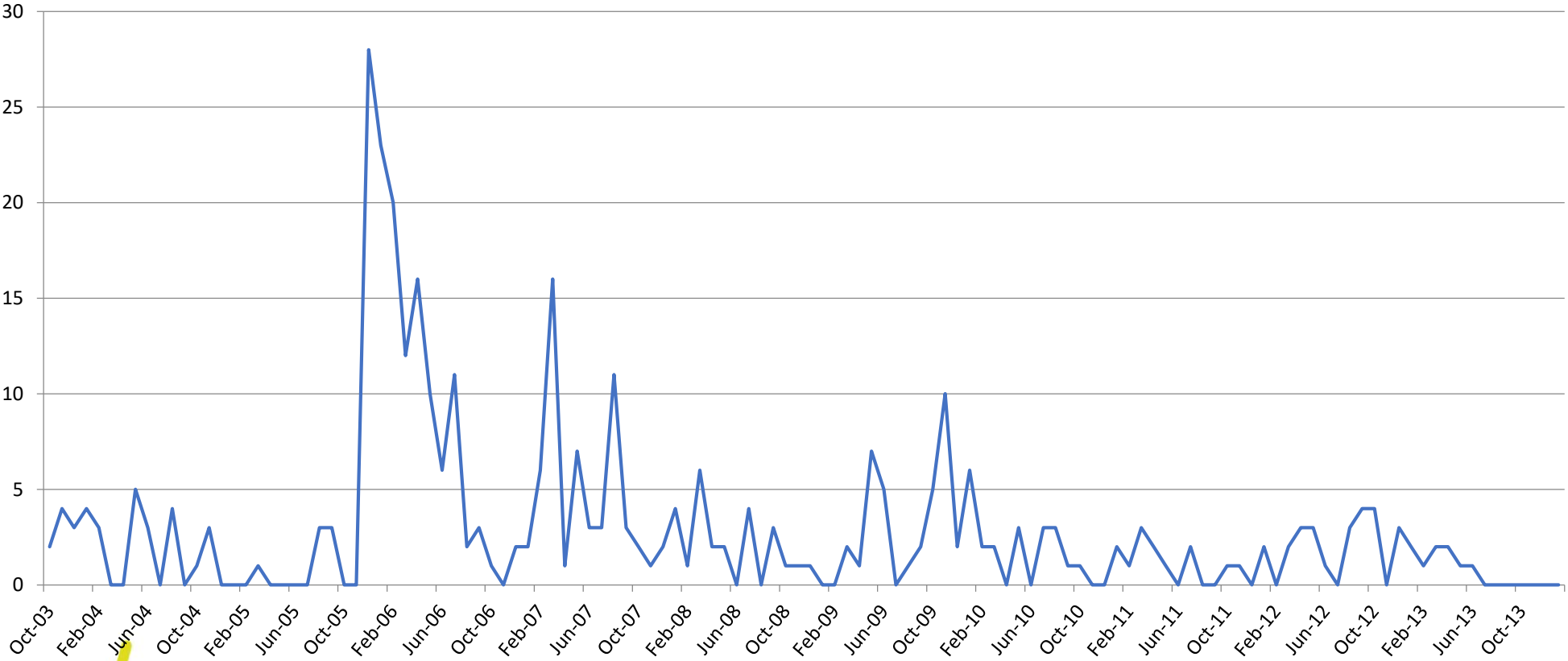
Lessons from the past for the future: - a journey from restriction to participation

Charley Hodgson – Senior Practitioner: Disability & Community Services

asid
2017 CONFERENCE
**PUSHING THE
BOUNDARIES**



Tom's Journey





Who is Tom ?

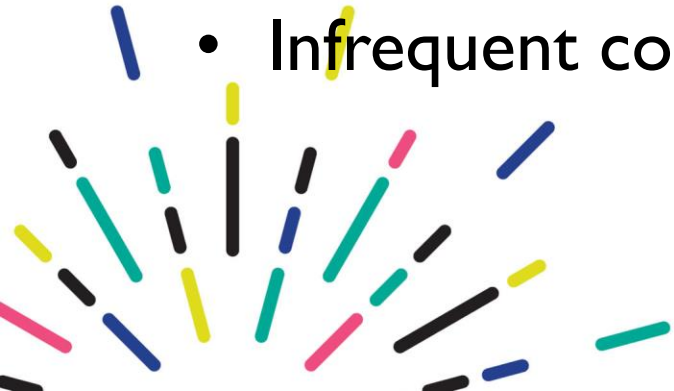
- 19 years old at the time of behavioural assessment
- Down Syndrome
- Mild to moderate hearing loss and poor eyesight
- Ambulant and very active
- A limited ability to recognise and communicate his emotions
- Able to perform some domestic tasks with help
- Liked music, DVDs, swimming, basketball, minigolf, cricket, volleyball





Tom's Background

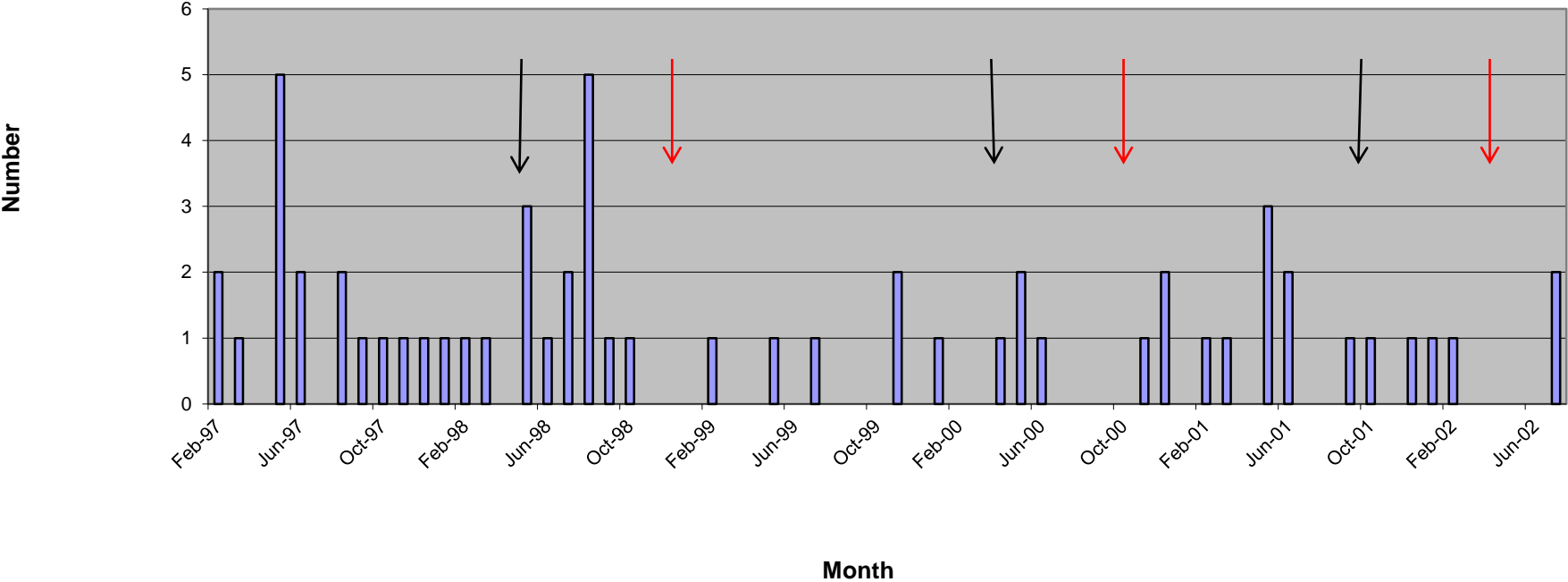
- Aggressive Behaviour at home from an early age
- Regular respite stays from aged 5 – fulltime from 9 years old.
- Children's group home at age 12
- Reports of being psychologically and physically abused by his parents – including overmedication.
- Infrequent contact with his parents.





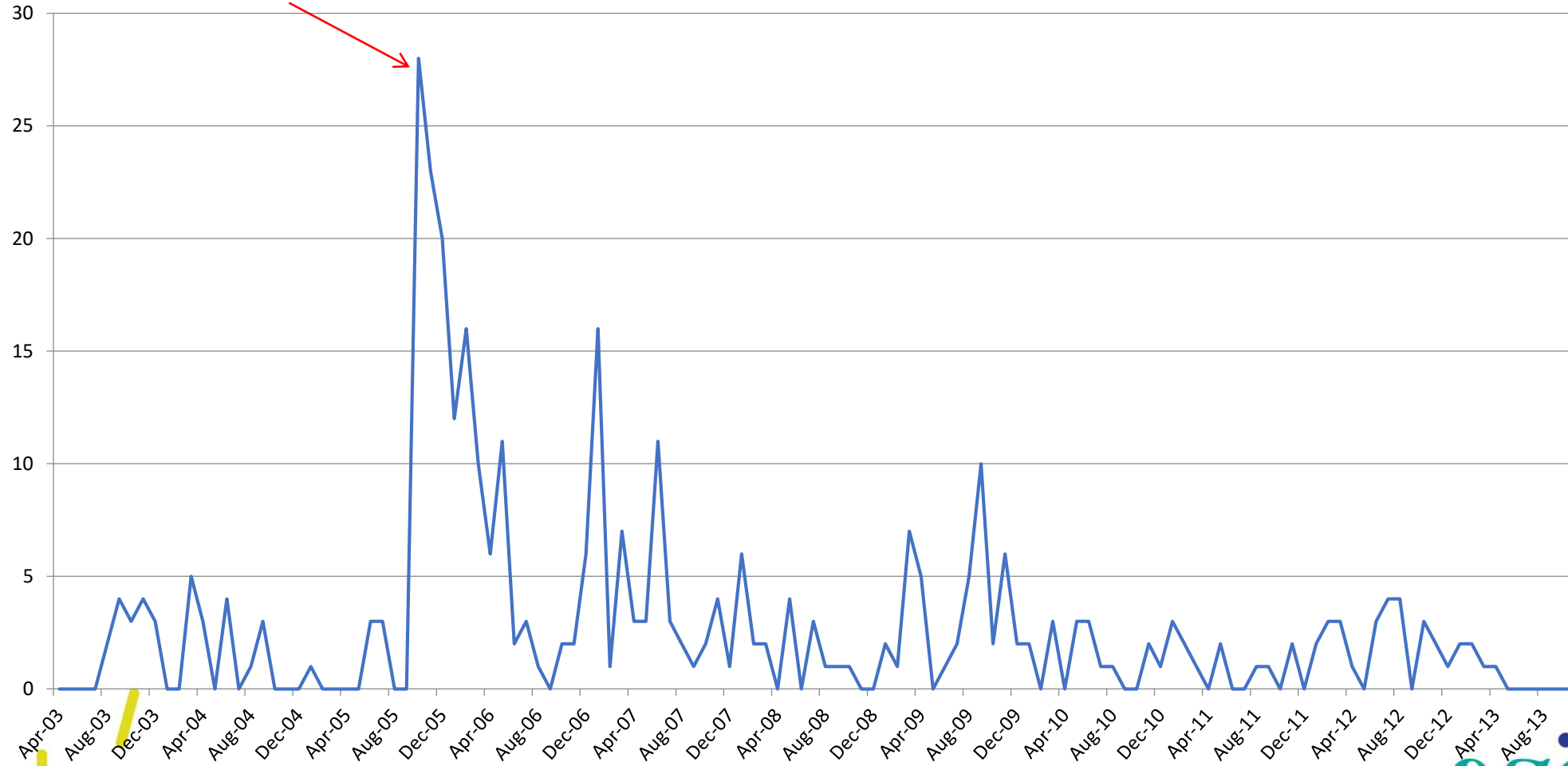
Tom's early years

No. of BAFs per month whilst living at Acme Inc





Tom's current home





Household dynamics

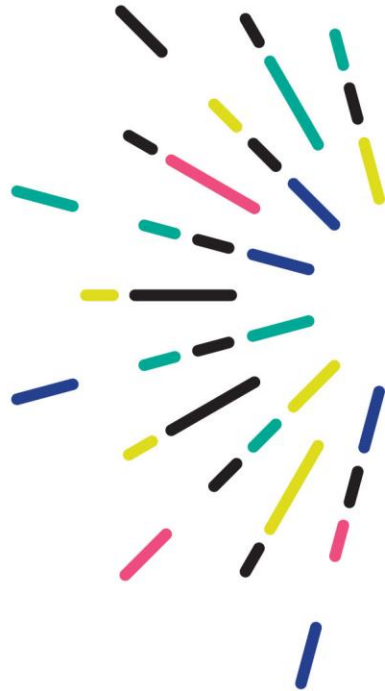
- Jane – Female, kind and affectionate but also bossy, overbearing and inappropriately playful
- Rob – Male, most skilled housemate (top dog), helped Tom. Was Jane's favourite.
- Anne – Female, regularly loud, blew 'hot and cold'





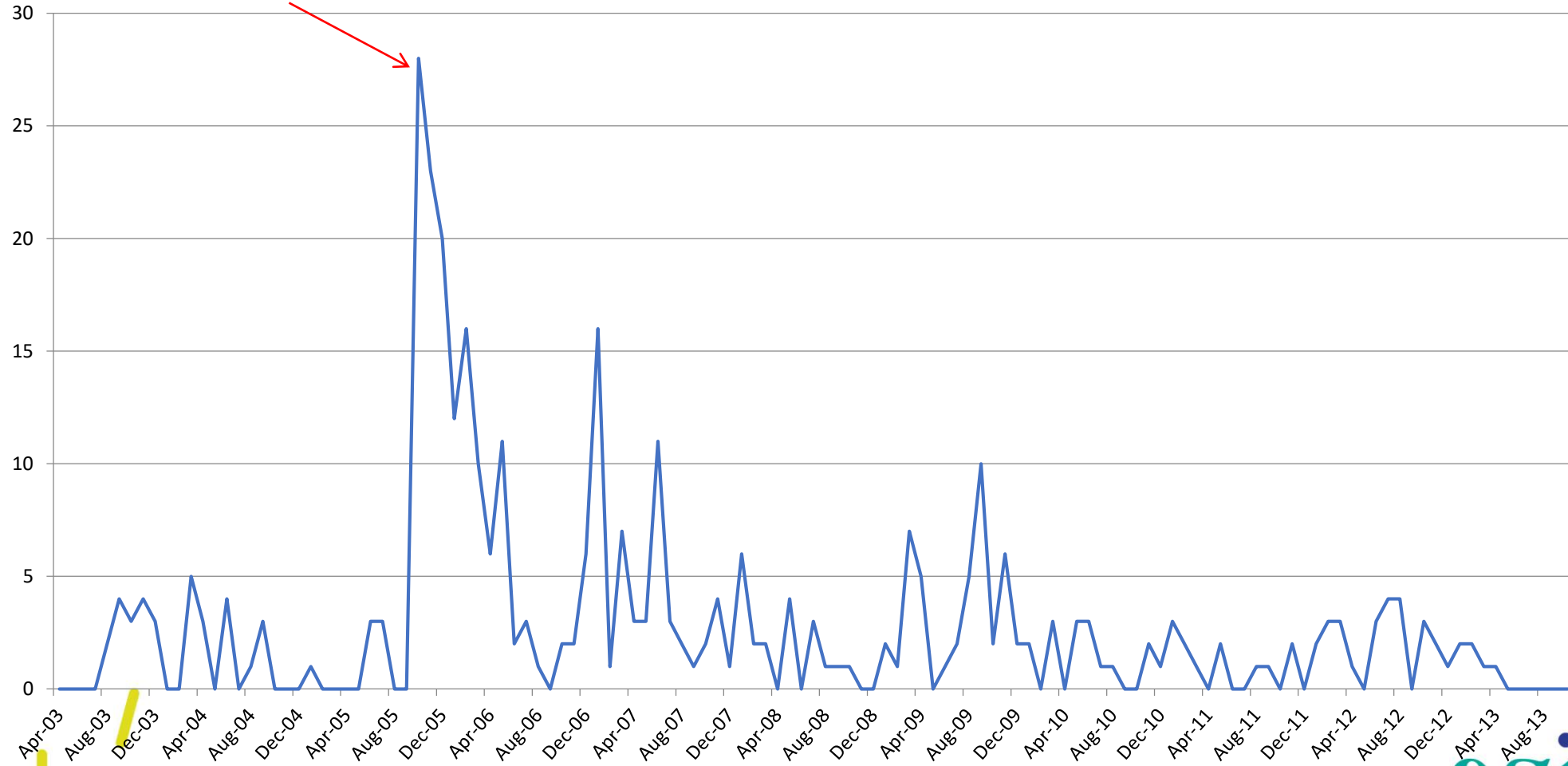
Triggers & Setting Events

- Being 'bossed' around by his housemates
- Others getting attention or going out without him
- Being asked to do something non-preferred
- Parent related situations (e.g. after contact)
- Other housemates annoying him
- Having his routine disrupted and/or feeling confused
- Having a request or want declined





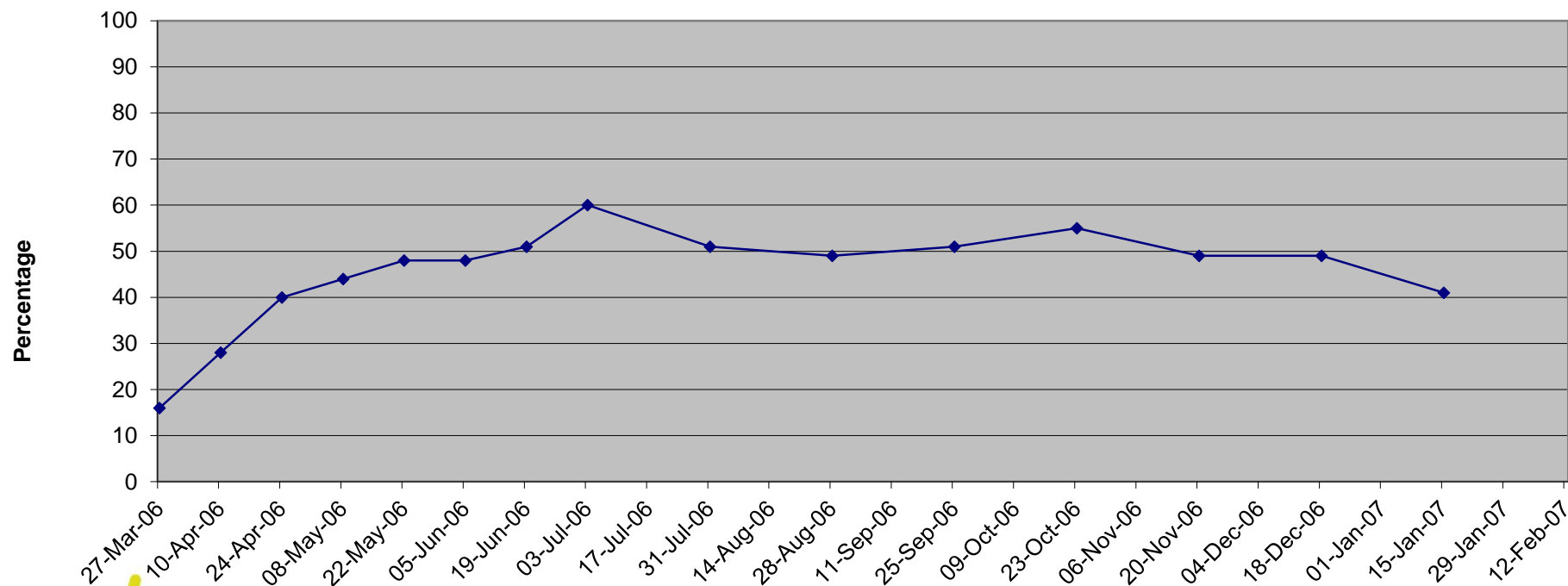
Tom's current home

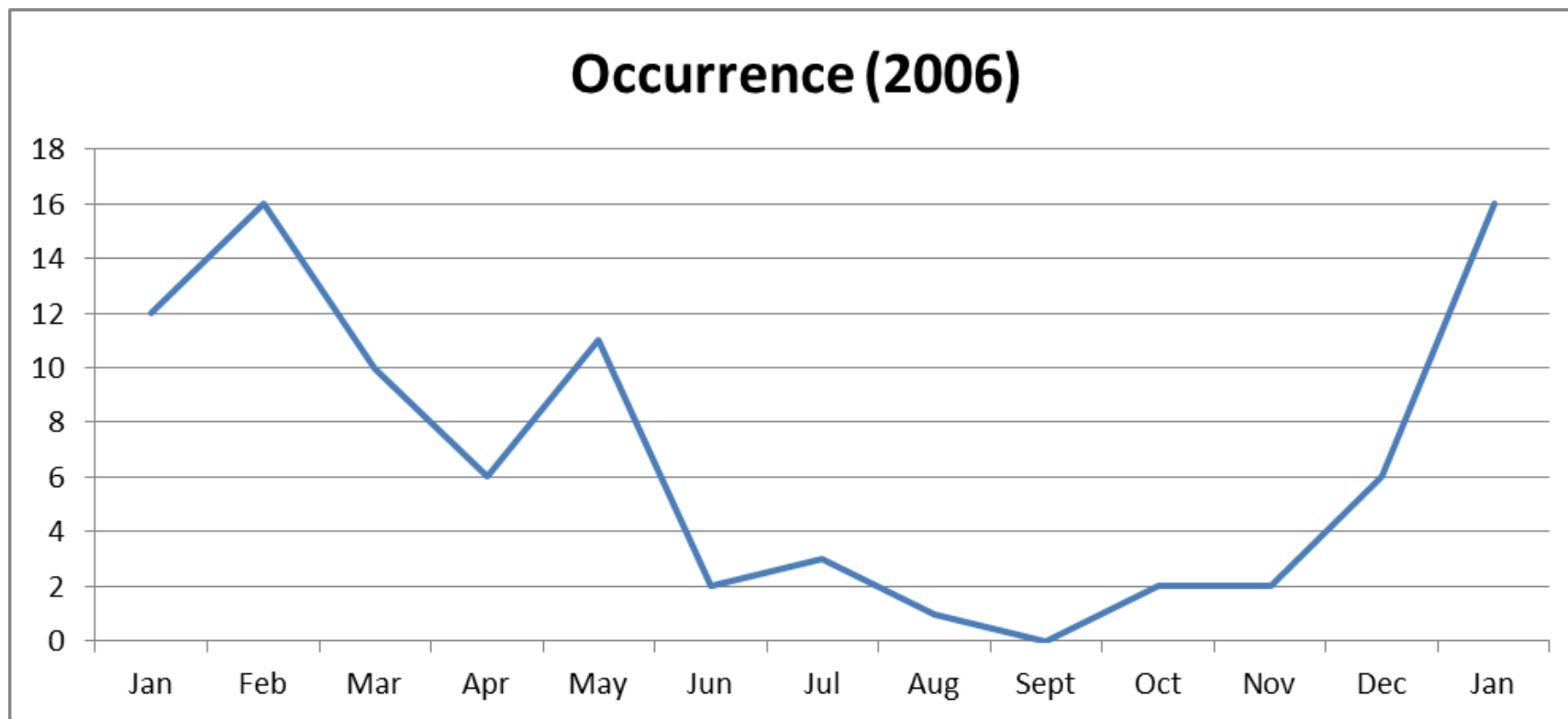




Plan Implementation

PSR for Tom's Support Plan

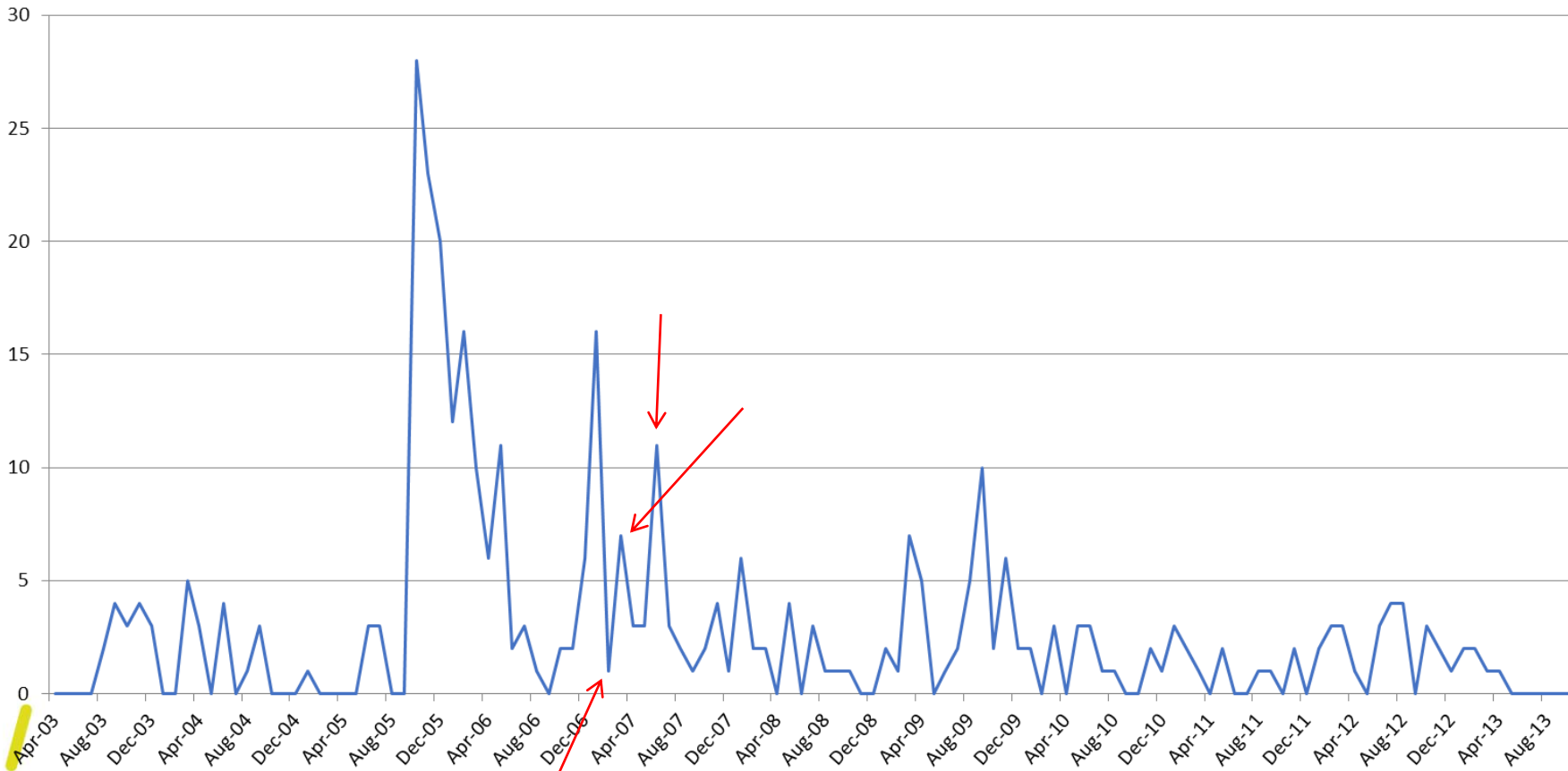




asid
2017 CONFERENCE
**PUSHING THE
BOUNDARIES**



Tom's current home





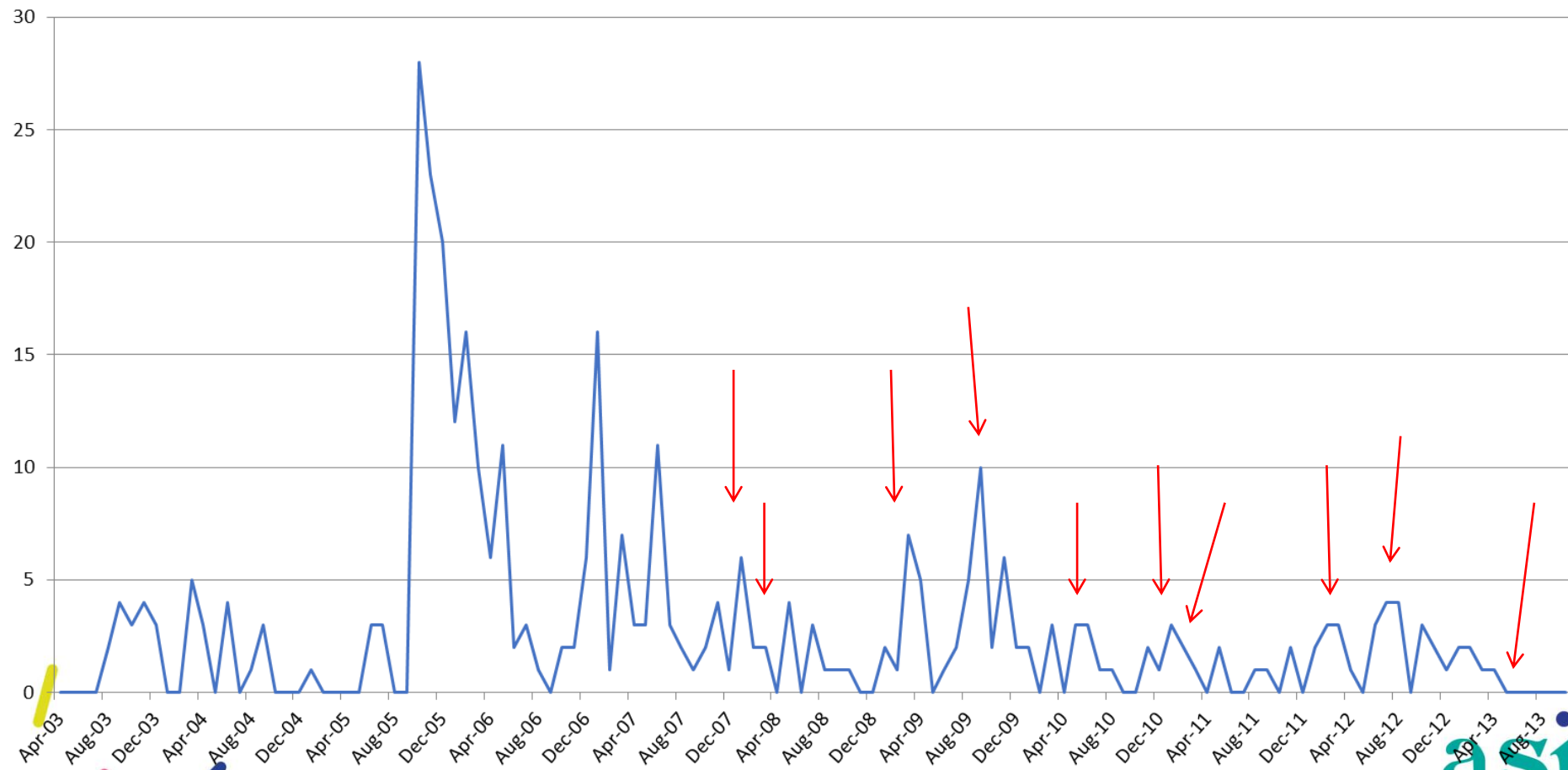
Restrictive Practices

- Initial reductions in seclusion and physical restraint

	Physical restraint	Seclusion
Baseline (T=56) (Dec2005-March2006)	27% (n=15)	3% (n=2)
May 2006 (T=18)	5 % (n=1)	0%
July 2007 (T= 55)	20% (n=11)	5% (n=3)



Tom's current home



asid

2017 CONFERENCE

**PUSHING THE
BOUNDARIES**



Implications

- Transfer of behavioural control ?
- Sustainability and Continuity in an NDIS world
- Trauma issues
- Choice and Control ?
- Workforce issues





Tom in 2017

- Tom attends community events with friends (e.g. Targa observer, fetes, concerts, walkathons).
- Goes to the movies, BBQs and dances.
- Catches buses and goes on day trips





Tom in 2017

- Is independent in a number of ADLs
- 'Chills out' surfing the Net
- Learning to cope with uncertainty
- Positive developments with his family





Questions ?

Charley Hodgson

Senior Practitioner – Disability & Community Services

charley.hodgson@dhhs.tas.gov.au



asid
2017 CONFERENCE
**PUSHING THE
BOUNDARIES**