

Twitter School

#ASID2019 Conference



Aine Healy
Ideas Info Action

[@ainehillbilly](https://twitter.com/ainehillbilly)



What is Twitter?

Twitter is a social networking website that's designed for finding and sharing short updates



It's used by more than 120 million people every day

www.twitter.com



Why Tweet?

#ASID2019

The #PHPCI2019 Influencers

Top 10 Influential

- @GroundSwellAus 100
- @MerrynGott 94
- @ShazzaHudson 80
- @PHPalCare 77
- @gemma_allen1 74
- @KezNoo 68
- @WePublicHealth 65
- @CerebralNurse 62
- @KStajduhar 61
- @JenniferTieman 61

Tweet

Prolific Tweeters

- @GroundSwellAus 628
- @PHPalCare 270
- @MerrynGott 216
- @WePublicHealth 193
- @AnnettaMallon 171
- @MelissaSweetDr 135
- @AileenCollier15 127
- @ShazzaHudson 94
- @gemma_allen1 91
- @PalliativeCareQ 63

Tweet

Highest Impressions

- @MelissaSweetDr 3.3M
- @GroundSwellAus 2.8M
- @WePublicHealth 2.6M
- @PHPalCare 685.7K
- @MerrynGott 594.2K
- @ShazzaHudson 513.6K
- @AnnettaMallon 224.5K
- @AileenCollier15 220.1K
- @gemma_allen1 198.7K
- @KezNoo 188.6K

Tweet

The Numbers

13.384M Impressions

3,693 Tweets

370 Participants

31 Avg Tweets/Hour

10 Avg Tweets/Participant

Tweet

Twitter data from the #PHPCI2019 hashtag from Sat, October 12th 2019, 12:15AM to Thu, October 17th 2019, 12:15AM (Australia/Sydney).



You Retweeted



Ellen Fraser-Barbour @ellenffb · Sep 17

Planning a conference? Please prioritise access.

1. Cut unexpected costs & stress by hiring accessible venues.
2. Have mobility, communication and sensory access needs discussed by organising committees early.
3. Ask attendees needs + follow up early (not a week before event).



10

42

Why Tweet?



'Make space for women with disabilities (in these discussions)', @Nic_Lee tells @QandA



Jo Watson @JoWat · Oct 31

New paper: Placing Preferences of People w #PIMD @ Center of #EndOfLife Decision Making through Storytelling #PalliativeCare #Intellectualdisability @Deakin_DI @MelissaJBloomer @hi_voss @SAGEPublishers @TAShtweet



You Retweeted

CID @CIDvoice · Sep 25

UN #CRPD committee recommends that Australia "Ensure no separation of children from parents on the basis of the disability of either the child or one or both of the parents"

bit.ly/2lx3uPn

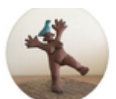
Great work at the UN @Spk0ut @JudyHuett @SoniaHume6

@IDRS_NSW @SalRob310



12

17



George Julian @GeorgeJulian · Sep 14

They fought to persuade the coroner that there should be. Now the discussion is happening about whether it should be an Article 2 inquest. Sally's family have done brilliantly to get this far but now they need our help. 10/12



ng @AndrewPulrang · Nov 3
ter & #CripTheVote people ... Does a
e collections that include activist and
ctives, not just inspirational self-help

16

42



Aine Hillbilly @ainehillbilly

Someone asked me today for an Easy English example of a psych report - that you might give to ppl w #IntellectualDisability (or parents that might have ID)

I've not seen one - any ideas?

@SP_Harmony @johhil @accesseasyengli @3DN_UNSW @qcidd @susanbuell @chrishattoncedr

4:28 PM · Sep 13, 2019 · Twitter for iPhone



Sharing your voice & others

- To your story
- An issue
- Research, info
- Platform to promote others

Working together and support

- Eg #SLPeeps @LDNurses
- Build support
- #CripVote #MakeTheNDISWork
- Online communities

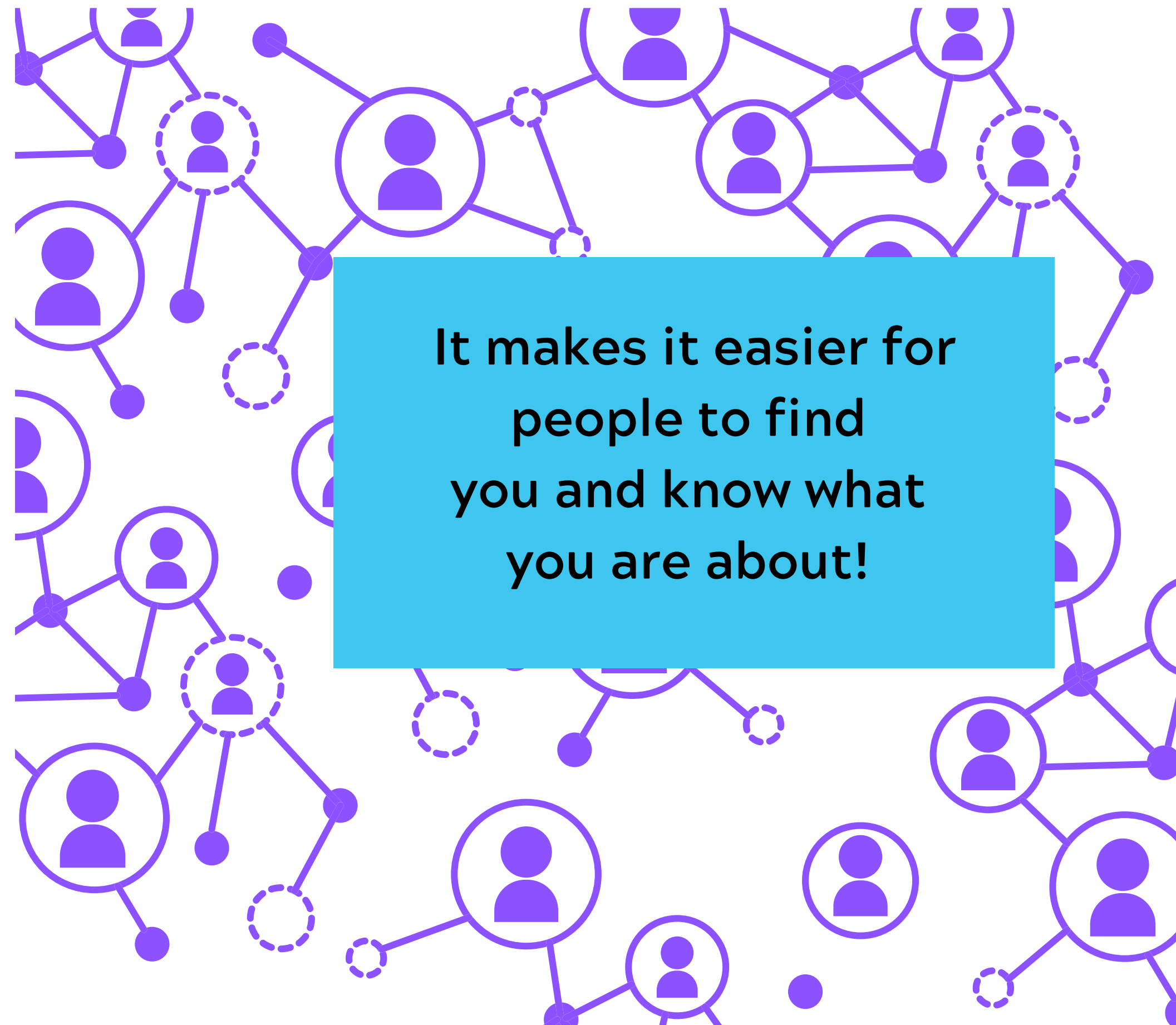
Research

- Finding stuff out
- Sharing
- Work together

Influence Change

- Media
- Politicians
- Decision Makers
- Campaigns
- Tell the story you want to tell

Why Tweet?



**It makes it easier for
people to find
you and know what
you are about!**



Twitter Profile

The screenshot shows a Twitter profile for Jo Watson (@JoWat). The profile includes a header image of a landscape with the aurora borealis, a profile picture of a woman with glasses, and a bio with various hashtags. It also shows location, birth date, and join date information, as well as follower and following counts. The bottom of the profile has a navigation bar with tabs for Tweets, Tweets & replies, Media, and Likes.

Profile Pic

Name

Handle

Bio - include some hashtags of your interests

Personal details incl up to date contacts

No of ppl you follow & no of your followers

Who follows you

You can sort what you see of their tweets

Header Pic

Extra Options

Message

Notifications

If you are following them

If they follow you



Following

Jo Watson

@JoWat Follows you

#SpeechPathology | #AAC | #BRCA | @deakin_DI | #Diabetes | #DisabilityRights | #HumanRights | #Disability | #technology | #Australia | She/her/hers |

Wurundjeri land (Melbourne) youtu.be/qMerG7CULJE

Born January 13 Joined January 2009

7,977 Following 9,328 Followers

Followed by Sarah Wagstaff, lindasteele, and 341 others you follow

Tweets

Tweets & replies

Media

Likes



What's in a Tweet

Name: Harmony Turnbull

Handle: @SP_Harmony

Profile Pic:

Text: Getting my #spweek selfie in before the end of this awesome week. #Communication is more complex than many of us realise and unless we feel #confident in our ability to choose the words and have a way to #express them clearly, it can be a real challenge. #slpeeps @SpeechPathAus

Hashtag

Mention - people will get notified

Pics turn out rectangle shape
Minimum size:
440 x 220 pixels



A Tweet is no more than 280 characters!

1 Comment

2 Retweets

18 Likes

Share icon

More ways to engage like message or copy the tweet

Comments

Retweet

Likes

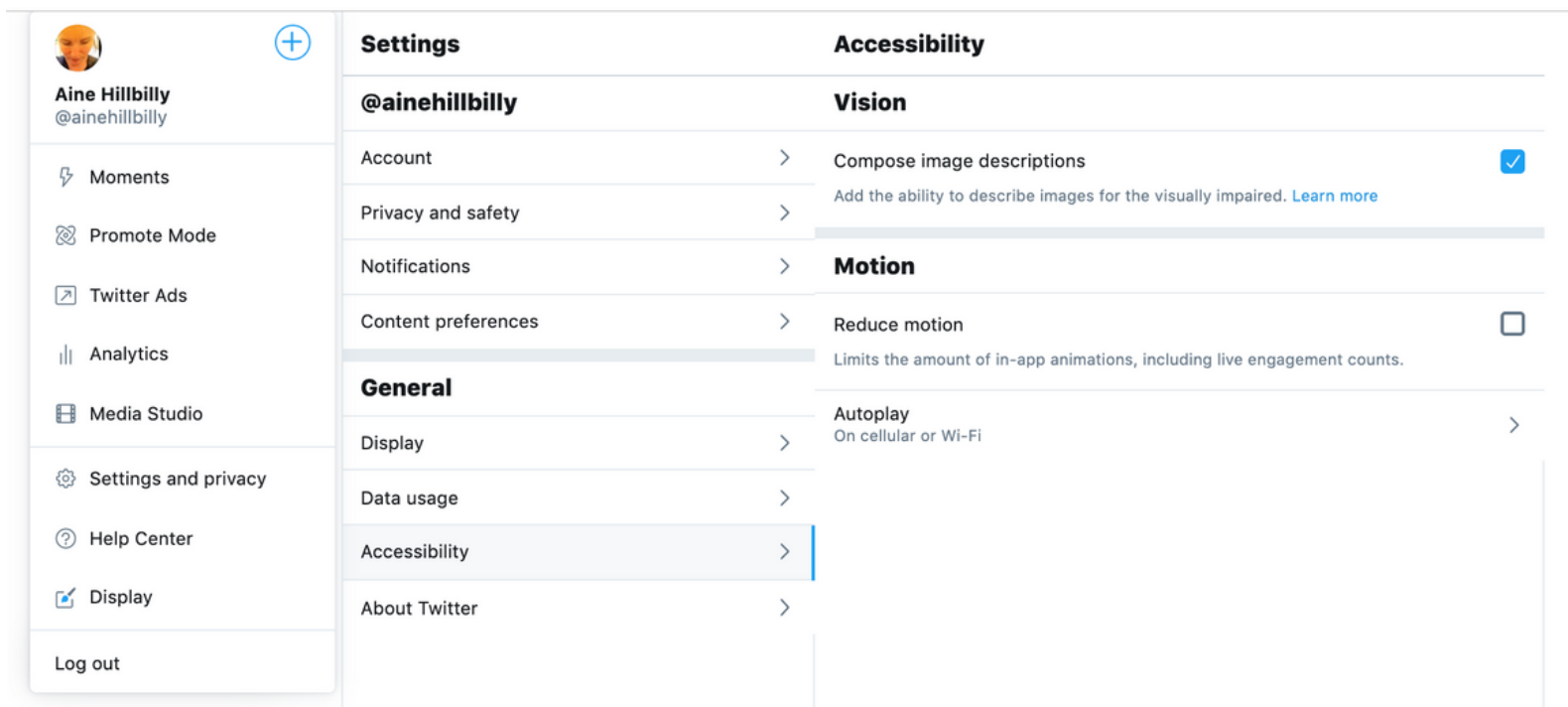


#IntellectualDisability



#intellectualdisability

Compose Image Descriptions





#Hashtags

#IntellectualDisability #LearningDisability

#ASID2019 #DisabilityRights #Disabled

#Ableism #DisabilityPride

#InclusiveEducation #Health #NDIS #Justice

#A11Y #Inclusion

#DisabilityRoyalCommission #CripVotes



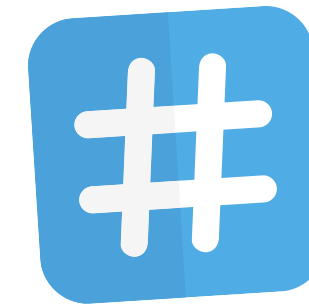
Who to Follow



Head to @ainehillbilly & for some ideas for you



- Write a tweet
- Tag 2 people
- Include #ASID2019
- Add a photo
- Add a weblink
- Follow 5 people
- Do a ReTweet w comment





Conference Tweeting Tips

- Pick # early and use it on everything
- Tweet presenters name & pres title
- Use presenters handle - @Speaker
- Make it clear if it is a quote
- Follow people and chat
- Incl links and pictures
- Add your own comments
- Make friends with a tweeter
- Put your handle on your slide 1st page!



Questions?





Tip!

Want to get better at Twitter?

**Commit to just 10 minutes
a day for a week.**





Thank you!



Want more? Find me at #ASID2019

Or find me on Twitter @ainehillbilly



E: aine@ideasinfoaction.com