



Responding to otherness. Encounters
with people with severe intellectual disabilities

The potential of *experimental-relational spaces of encounter*

Dr Gustaaf Bos, University of Humanistic Studies, Dept. Care Ethics

Structure of my talk

- 1) observations and reflections from my PhD-research
 - multilayered evading of otherness
 - need for a more *receptive, responsive, reflective* and *adventurous* approach of interactions
- 2) ‘experimental-relational spaces of encounter’
 - a reflective approach to perceived strangeness
- 3) insights from recent collaborative projects
 - the promising potential
- 4) how about you?
 - reflections, feelings, questions



- *reversed* integration
- 2010-2015
- ‘best of both worlds’
- neighbours with and without severe ID, care professionals
- what happens in encounters?



‘dodging difference’

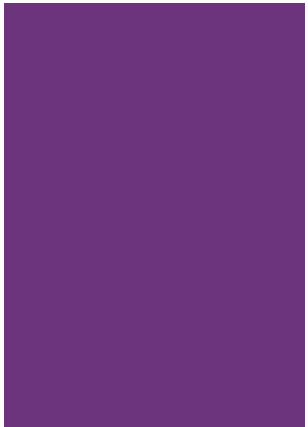
1. ... in everyday encounters between residents with and without intellectual disabilities;
2. ... in interventions of care staff;
3. ... in governmental and organizational policy documents



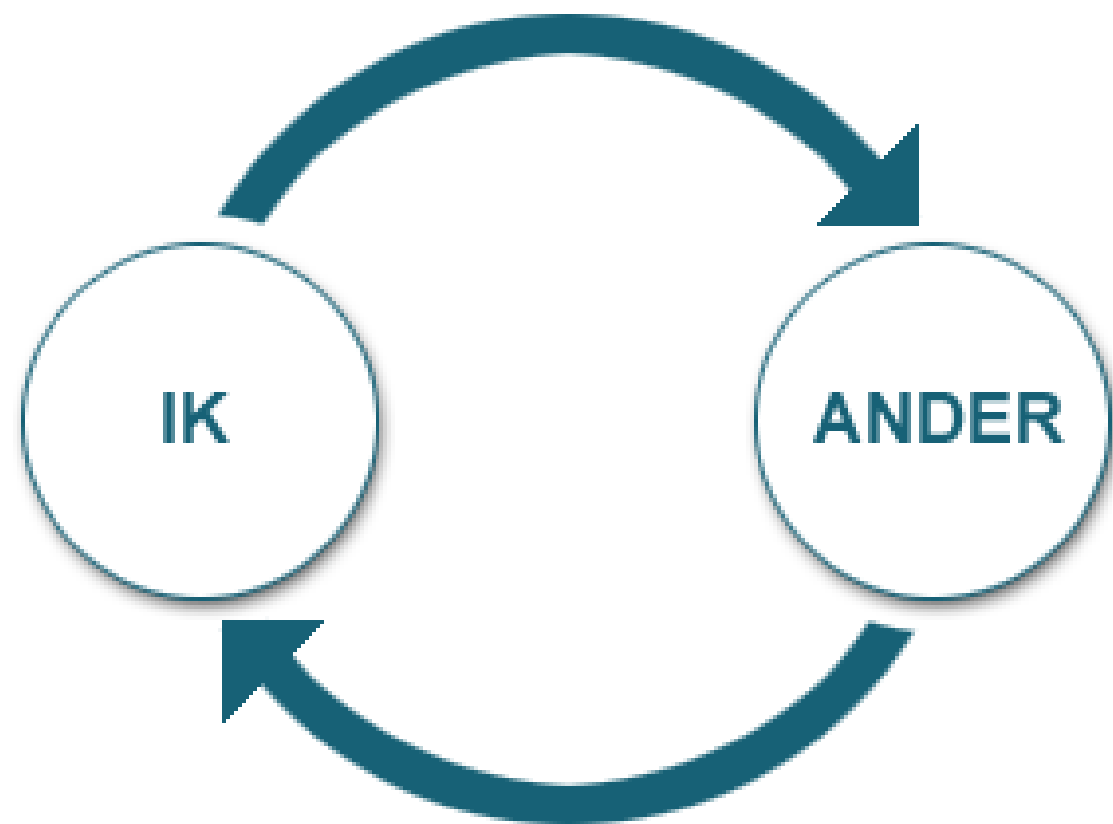
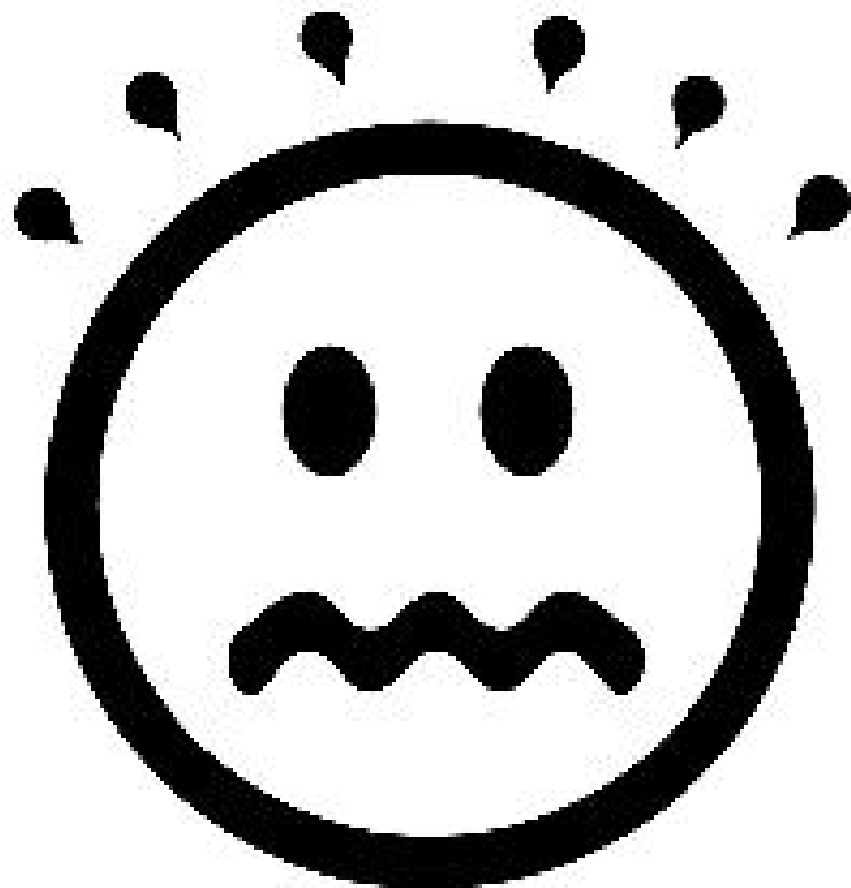


FIDELITY SOCIAL JUSTICE **DIVERSITY** HUMILITY SUPPORT SYSTEM COURAGE CATALYST DIFFERENCE
CULTURE RESPECT **DIVERSITY** MUTUAL INTERSECTIONAL GROWTH INTERSECTIONALITY
BELONGING COURAGE TRUST ACCOUNTABILITY WELCOMING VALUED GROWTH CENTERING COMMUNITY
WELCOMING TRANSPARENCY INTERACTING ACTIVE FAIRNESS JUSTICE NEEDS DIGNITY
POWER **EQUITY** FAMILY TRANSPARENCY RECEPTIVENESS CONNECTION
OPENNESS **EQUITY** EQUALITY COLLECTIVE RESPONSIBILITIES ACCOUNTABILITY
TRUST **EQUITY** SOCIAL JUSTICE DIFFERENCE INTERSECTIONALITY RECEPTIVENESS INFORMATIVE
HONESTY INTERSECTIONALITY COMMUNITY EXPERIENCES **HONESTY WELCOMING** RESPECT
HONESTY DIFFERENCE **AFFIRMING** IDENTITIES **INCLUSION** AFFIRMING
LEADERSHIP INFORMATIVE VALUED PERSPECTIVES **INCLUSION** POSITIONALITIES
FRIENDLINESS SUPPORT SYSTEM SOLIDARITY **INCLUSION** BELONGING
RECEPTIVENESS CATALYST THRIVING CONSCIOUS COMMUNITY APPRECIATION **CARE**











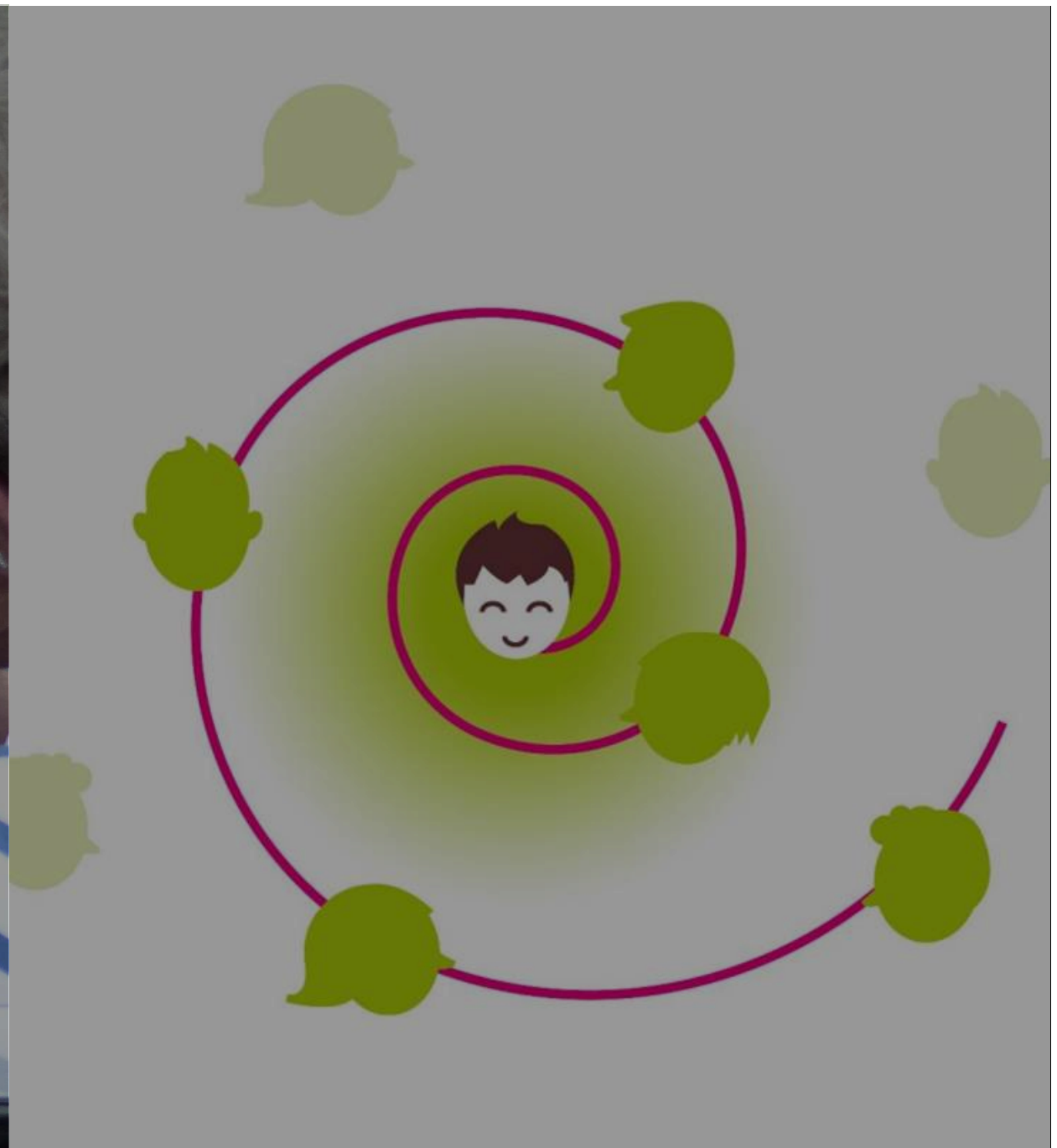
62/140

Klee

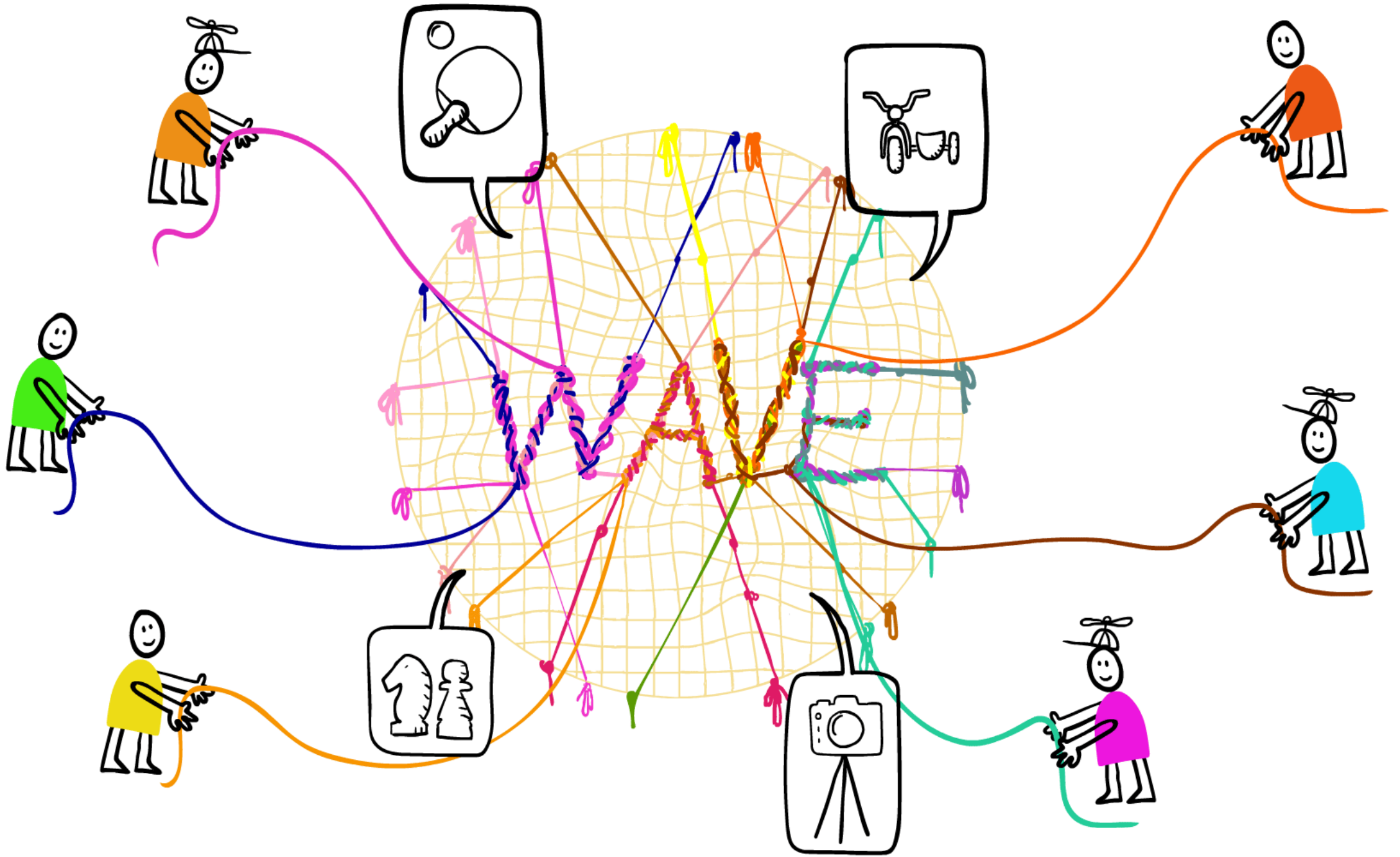


Values of 'experimental-relational spaces of encounter'

- 1) bodily awareness
- 2) epistemic and moral humility (Young, 1997)
- 3) trust ('what is the worst that can happen?')
- 4) courage (to question and adjust privilege, perspective and (ir)responsibilities)
- 5) creativity (trying out new and unusual communication vehicles)
- 6) substantiated stubbornness (deviating from routines and protocols based on own deliberation)
- 7) perseverance (ongoing engagement with 'slow', existential questions; Kunneman, 1999)









Wandelen met ...

Tuinieren met ...

Nagels lakken met ...

Puzzelen met ...

RIAN

Want more?

- website Project WAVE: <https://en.projectwave.nl/>
- Bos, G.F. & Abma, T.A. (2021). Putting down verbal and cognitive weaponry: The need for ‘experimental-relational spaces of encounter’ between people with and without severe intellectual disabilities. *Disability & Society*, DOI: [10.1080/09687599.2021.1899896](https://doi.org/10.1080/09687599.2021.1899896)
- Bos, G.F. & Kal, D. (2016). The Value of Inequality. *Social Inclusion*, 4(4), 129-139. DOI: <http://dx.doi.org/10.17645/si.v4i4.689>
- Meininger, H.P. (2013). Inclusion as heterotopia: Spaces of encounter between people with and without intellectual disability. *Journal of Social Inclusion*, 4(1), 24–44. Retrieved from <https://josi.journals.griffith.edu.au/index.php/inclusion/article/view/252>
- Tillmann-Healy, L.M. (2003). Friendship as method. *Qualitative Inquiry*, 9(5), 729–749. <https://doi.org/10.1177/1077800403254894>
- von Peter, S., & Bos, G.F. (2022). The Necessity of unsettling encounters in collaborative research, Reflections of two researchers without experiential expertise. *Collaborations: A Journal of Community-based Research and Practice*, 5(1), 4. DOI: <http://doi.org/10.33596/coll.78>



Reflections, questions, remarks?